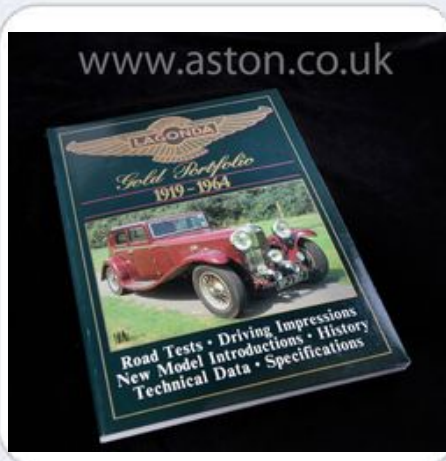


## Lagonda Gold Portfolio 1919-1964

AWB022



**£18.50**

**£22.20 inc VAT**

### Product Description:

#### Lagonda Gold Portfolio 1919-1964

Having built motorcycles in the early part of the century Lagonda made a few cars prior to 1919. The company's founder died in 1920 and thereafter the cars became more conventional. The cars have always had a sporting tradition, entering several of the long distance events. The road cars were grand tourers and sports cars with a high reputation. The small factory could not cope and went into receivership. The firm was saved and the LG range was introduced.

Financial troubles loomed after the war and the company was merged with Aston Martin in 1948. Production was moved to Newport Pagnell and after model changes the Lagonda name was not used from 1958 to 1961 when the Rapide was introduced. Including road and comparison tests, new model introductions, technical and specification data, racing, components, drivers impressions, development.

Models covered: 11hp, 11.9hp coupé, saloon, 12/24 saloon, 14/60 tourer, 16/65, 2-litre Speed Model, 3-litre, 2-litre supercharged, Selector Special, 16/80, 4.5-litre Six, Rapier, Rapide, V12, Saloon de Ville, Le Mans, 2.6-litre, 2.5-litre Drophead Coupé & DB Saloons.

172 pages, 400 illus.

Please contact us if you require any further information about this product:

Tel. +44 (0) 1207 233 525 or complete a request form here: [Contact Us](#)

